

Thank You

Thank You for the purchase of your TR-1 Gold wireless remote. Developed with the fisherman in mind, the TR-1 wireless remote has been designed to give fishermen that competitive edge in fishing and unparalleled precision and control of their boat. Nautamatic Marine Systems, Inc. is dedicated to create the finest controls and guidance systems for the best in boating and fishing.

Safety

You are responsible for the safe and prudent operation of your vessel. Your TR-1 Gold autopilot and wireless remote is a tool that will enhance your capability to operate your boat and catch fish. It does not relieve you from the responsibility for safe operation of your vessel. You must avoid hazards to navigation and never leave the helm unattended.

You must always be prepared to promptly regain manual control of your kicker. The autopilot steering and throttle actuators can fail and hard over.

Learn to operate your autopilot on calm and hazard free waters.

Simultaneous operation of several radio-controlled autopilots in near proximity may cause the autopilot to fail to respond to keypad button presses. The near boat transmitter may jam your boat's receiver but will not control your autopilot or render the wired remote useless.

The Wireless remote will not respond as quickly to multiple button presses as the wired remote.

On occasion, the wired remote will erroneously leave an indicator light on the throttle up/down and idle resume indicators. If this creates a problem for you, we can load an updated software version on your ECU to eliminate the erroneous indicators.

There is a remote possibility that talking on a cellphone may interfere with, and possibly jam the radio receiver. Please use caution.

Note:

The wireless remote keypad is not waterproof. Do not expose the remote to rain or water spray. Water in the remote will cause it to malfunction and possibly cause throttle runaway. In the event the remote does get wet, remove the battery from the remote immediately. If the remote is subject to salt-water incursion, remove the battery and gently rinse the disassembled unit with clean alcohol and let it dry out before re-assembly and reuse.

Wireless Kit Complete 120-2400-00



Item	Description	Part #	Qty.
1	Wireless keypad transmitter	120-2420-00	2
2	Neck Lanyard	305-2401-00	1
3	Antenna	240-2452-00	1
	Antenna Base	340-2451-00	1
	#4-40 x 3/8 Php Screw	310-0072-03	1
4	Receiver/cable assembly	130-2410-00	1
9	#4-40 x 1 Oval head Screw	310-0104-16	2
8	#4 x 1 Php Sheet Metal Screw	310-0072-13	2
7	#4-40 x 1 Php Screw	310-0004-16	2
6	#4 x 1 Oval Head Sheet Metal Screw	310-0172-16	2
10	#4-40 Nut	310-0041-02	4

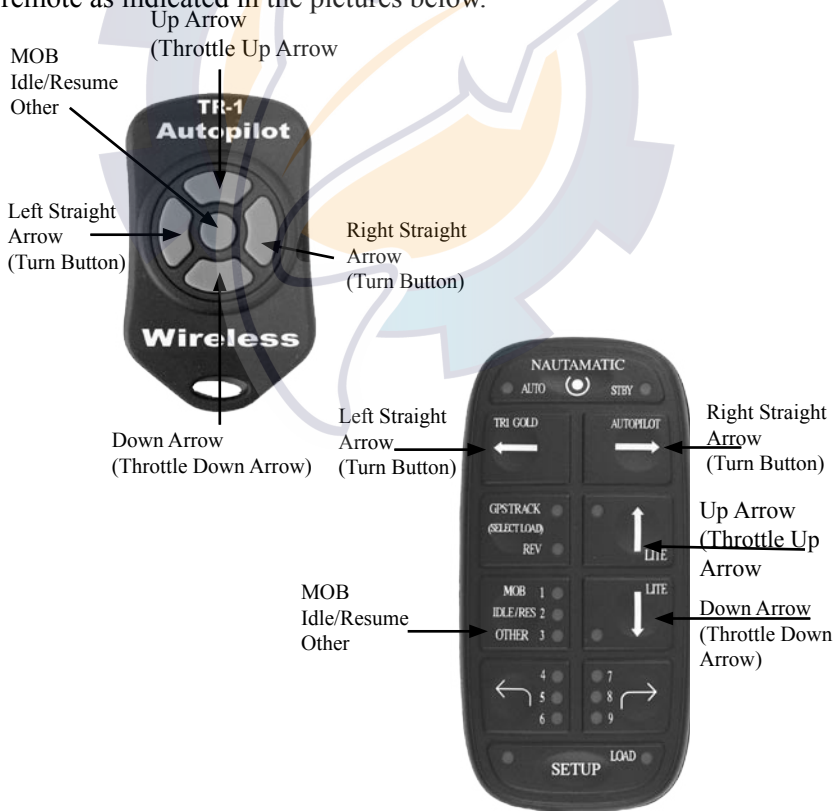
Introduction

Thank you for purchasing this accessory for your TR-1 Autopilot. Please read and understand this manual before installing and operating this system.

The TR-1 wireless remote control is an add on system that provides the most often used functions of the standard TR-1 wired remote in a compact wireless form. (Note: The wireless does not replace your existing handheld. You will still need your wired handheld to tune your autopilot or use the other functions of the autopilot.)

Keypad push-button functions

The buttons on the wireless keypad correspond to buttons on the wired remote as indicated in the pictures below.



Installation Considerations

When installing the wireless remote system: **1) Mount the receiver box and antenna away from sources of electronic interference such as the autopilot hydraulic pump and the engines ignition systems. 2) Mount the antenna in free space and in a direct line of sight to where the keypad transmitter is expected to be used.** Do not mount the antenna in a corner or behind a bulkhead that may reflect or absorb the radio signal from the remote.

Choose the locations for mounting the receiver and antenna such that the cable lengths allow for proper connections. You may want to temporarily mount the components with tape or tie-wraps and try out system operation before hard mounting any parts.

Installation

1. Mount the receiver box. (Mount the unit away from possible electronic interference, such as the Electrohydraulic Unit.) Use the screws provided, or use wire ties to mount.
2. Mount the antenna using the screws provided.(See Installation Considerations above.)
3. Unplug the wired remote from the ECU wire #3, and plug in the wire coming from the receiver box unit. See Fig.1 and Fig.2
4. Plug the wired handheld into the second wire stub from the receiver. See Fig.3. Also see installation diagram on page 5.



Fig.1

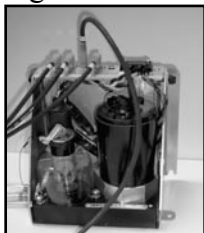
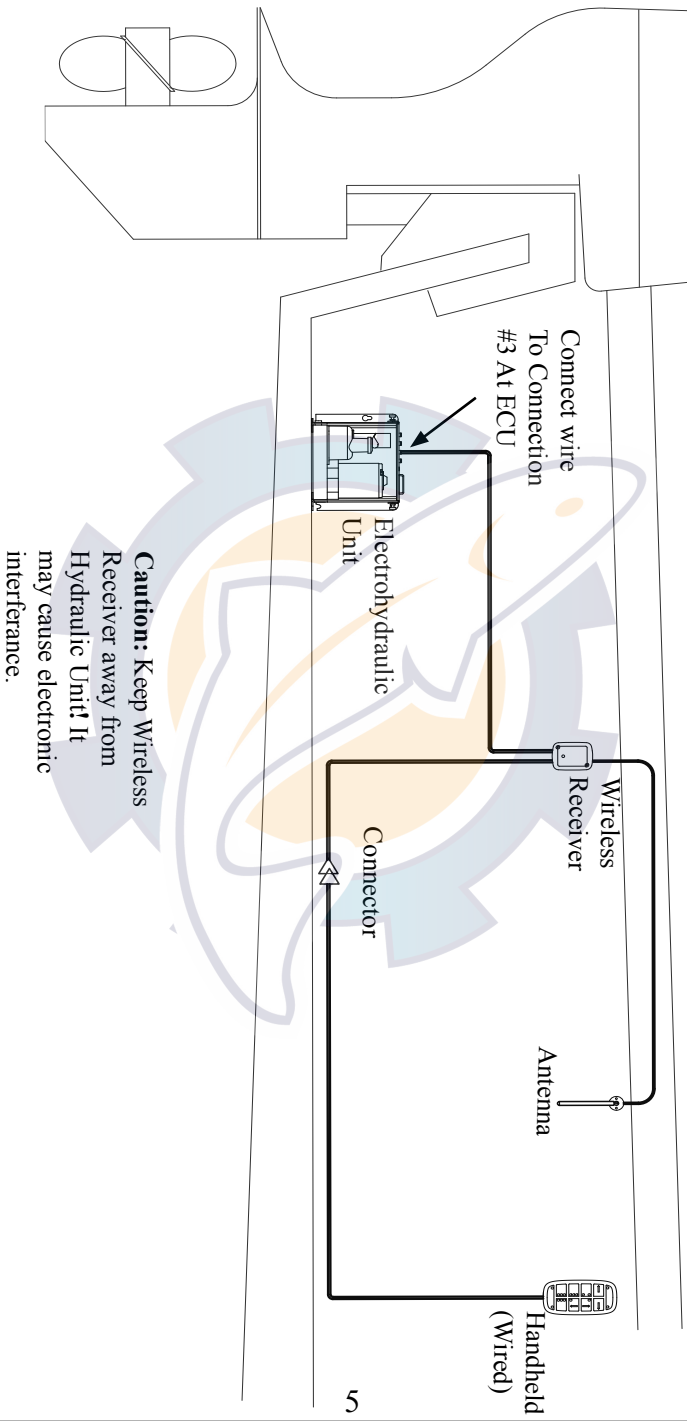


Fig.2



Fig.3

Installation Diagram



Security Codes

Each keypad transmitter transmits its own unique identification code when a button is pressed. The receiver computer must be programmed to recognize your transmitter. Program the receiver/transmitter pair by:

- 1) Turn the TR-1 Autopilot on.
- 2) Watch the LED on the receiver box, when it starts blinking-press any button on the wireless keypad until the LED stops blinking.

You will need to do this (once) anytime you change keypads.

Replacement Remote Keypads

You may purchase replacements by calling Nautamatic Marine Systems, Inc.

1-800-588-7655

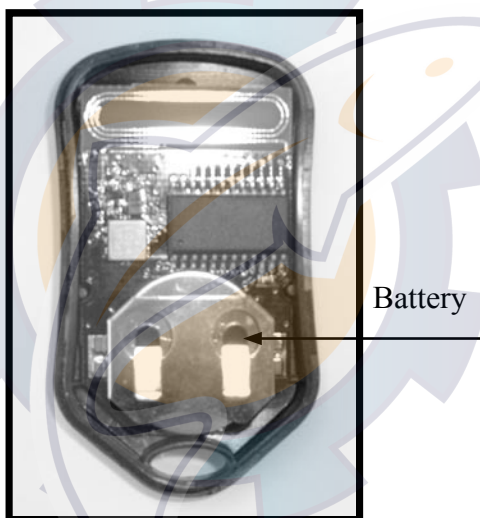
Inside the back cover of your keypad is written a 3 Character code. This code is the security code that your receiver has been trained to respond to. If you would like to keep this code, tell the sales representative at the factory the code digits when you order your new keypad. If you do not care about the code, you will be sent a keypad with a randomly assigned code. You can, of course, reprogram your receiver to recognize the new keypad when you take it to your boat.

Changing Batteries

When the remote control system starts to respond erratically, the keypad remote may need battery replacement.

The wireless remote keypad is powered by a **CR-2032 Button Lithium Cell Battery**.

To access the battery for replacement, gently pry apart the two halves of the keypad at the seam (fingernails will do for this) Once the unit is open, remove the battery by sliding the battery out from beneath the retainer. Replace with the same type of battery.



Caution:

The wireless remote keypad is **not waterproof**. Do not expose the remote to rain or water spray. Water in the remote will cause it to malfunction and possibly cause throttle runaway. In the event the remote does get wet, remove the battery from the remote immediately. If the remote is subject to salt-water incursion, remove the battery and gently rinse the disassembled unit with clean alcohol and let it dry out before re-assembly and reuse.

Nautamatic Marine Systems, Inc (NMSI) Limited Warranty Wireless

Nautamatic Marine Systems, Inc. or TR-1 Autopilots (collectively referred to as "The Warrantor") will repair this product with new or refurbished parts, free of charge, in the USA from the date of original purchase in the event of a defect in material or workmanship as follows:

For one (1) Year-Receiver/cable assembly and Antenna only

Wireless Keypad Transmitter has no warranty expressed or implied other than out of box failure.

You must report this out of box failure within seven (7) of purchase. You will receive two (2) keypads at time of purchase. One of them is considered your warranty replacement.

Batteries are not warranted.

For assistance in the USA or Canada in obtaining repairs contact:

Nautamatic Marine Systems, Inc.

3248 SE Ferry Slip Road

South Beach, OR 97366

Office: (541) 867-6751

Fax: (541) 867-6754

1-800-588-7655

If repair is needed, during the warranty period the purchaser will be required to furnish a sales receipt/proof of purchase indicating date of purchase.

The purchaser will be responsible for shipping the unit to the above address, and will be responsible for all shipping costs to ship and return the repaired unit to the customer.

This warranty only covers failures due to defects in materials or workmanship which occur during normal use and does not cover damage which occurs in shipment or failures which are caused by accident, misuse, abuse, neglect, mishandling, misapplication, faulty installation, improper maintenance, alteration, set-up adjustments, inadequate signal pick-up, modification, power surge, commercial use of the product, water damage, or damage that is attributable to acts of God, or service by anyone other than a NMSI factory service. This warranty does not apply to any damage to the NMSI product that is the result of rust or corrosion. This warranty does not cover any NMSI product that has been altered or modified so as to adversely affect its operation, performance of durability, or that has been altered or modified to change its intended use. This warranty does not extend to repairs made necessary by normal wear or by the use of other parts or accessories, which in the reasonable judgment of NMSI are either incompatible with the NMSI product or adversely affect its operation, Performance, durability, or that has been altered or modified to change its intended use.

NMSI obligation under this warranty is strictly and exclusively limited to the repair or replacement of defective parts, and NMSI does not assume or authorize anyone to assume for them any other obligation.

NMSI reserves the right to change or improve the design of any NMSI product without assuming any obligation to modify any NMSI product previously manufactured.

Limits and Exclusions

NMSI assumes no responsibility for incidental, consequential or other damages, including, but not limited to expense for gasoline, expense of transporting the NMSI product to an authorized dealer and expense of returning the NMSI product to the owner, removal of the NMSI product from a boat and reinstallation, mechanics travel time, telephone, trailering or towing charges, rental of like product during the time warranty service is being performed, travel, lodging, loss of or damage to person or property, loss of revenue, loss of use of the NMSI product, loss of time or inconvenience.

Some states do not allow the exclusion or limitation of incidental or consequential damages, or limitations on how long an implied warranty lasts, so the above exclusions or limitations may not apply to you.

This warranty gives you specific legal rights and you may also have other rights which vary from state to state.

In the event that a warranty claim is required outside the continental United States or Canada, with the exception of Alaska or Hawaii, there may be additional charges not covered under warranty based on local practices and conditions, such as but not limited to, freight, insurance, taxes, license fees, import duties, any and all other financial charges, including those levied by governments, states, territories and their respective agencies, which will be the responsibility of the retail purchaser.